



Report

Public Consultation Meeting – Lake Kipawa Concerted Management Plan

Thursday, April 18, 2013 from 6:30 p.m. to 9:30 p.m., salle de l'âge d'or, Témiscamingue

Attendance: Approximately 100 participants from all walks of life: stakeholders, citizens, organisations, companies, etc. The attendance list has been recorded.

Conduct of meeting:

The three objectives of the meeting were as follows:

- 1) Present the process (historical background, objective of the Lake Kipawa Concerted Management Plan, activity schedule to successfully complete the project, main issues at stake)
- 2) Hold public consultation workshops
- 3) Appoint a Users Consultative Committee

The meeting was facilitated by Jean Arsenault, translated by Chantal Tremblay and sound system provided by Northern Translations Services Inc.

-
- 1) Presentation of the project by OBVT's Project Manager, Thibaut Petry. 20 minutes. The presentation's visual support is available in Appendix 1.
The presentation was followed by a question period on the presentation's content:
 - Some questions remained unanswered concerning the role of the Users Consultative Committee. A point was clarified: the role of the Users Consultative Committee is to ensure a close follow-up of the project and to identify the concerns of all the actors around the lake. It has no legal status and cannot act as a board of directors. Sharing of ideas, each and everyone's objectives and explanations of points of view will allow for the emergence of the different perspectives. It is important to note that the Consultative Committee is not a decision-making body, but it is aimed at defining elements that will be integrated in the Concerted Management Plan. The Consultative Committee's mandate does not merely consist in validating documents, opinions and concerns. It's there to orient the project, ensure that the documents truly reflect the different interests, and make additions. The Committee would meet three times during the year.
 - What will happen next year, after the Plan has been developed? The document will be presented to the MRC de Témiscamingue and the MRN. The MRN will then make the final decision: it is their responsibility to grant leases on public land (as appropriate).
 - It was reminded that the MRCT, the OBVT, the Steering Committee members and the municipalities may be contacted at any time for more information on the project.

- The name “Lake Kipawa Concerted Development Plan” is not properly interpreted, the participants asked if there was a hidden agenda, or development ideas already prepared before the consultation. The answer is clearly no. The process is really to involve the stakeholders, the population and the organisations right from the start to produce a document truly reflecting the reality of the situation and everyone’s concerns.

From now on, the document will be called the Lake Kipawa Concerted Management Plan, to avoid any confusion.

Other concerns were raised on the management of Lake Kipawa and they are included in Appendix 2.

2) Public consultation workshops

The participants were divided into subgroups of about ten persons and the purpose of the workshops was to discuss the two following topics:

- What’s the most important according to you for Lake Kipawa?
- Should Lake Kipawa be developed? If so, how do you envision the development of the Lake? If not, why?

Each group wrote down their opinion on the topic and debated for about twenty minutes.

After each workshop, a plenary session was held to hear each one’s opinion. The outcome of the workshops was compiled in table form in Appendix 2.

3) A general plenary session followed to express additional points (appended).

4) Appointment of a Users Consultative Committee

Being informed on the role of the members sitting on this committee (see above), interested people gave their name and contact info to sit on the committee.

An important point was mentioned regarding the committee membership:

“The people sitting on this committee are not the only ones involved in the project. Any person or organisation who would like to share their concerns or comments may do so by contacting the OBVT (thibaut.pettry@obvt.ca), their municipality or a member of the Consultative Committee.”

This allows not to exclude anyone from the process.

The meeting facilitator concluded by asking all participants in the room if they had the impression they had expressed their views. Apparently so, and certain participants thanked the organisers of the meeting.

Appendix 1: Presentation of the Lake Kipawa Concerted Management Plan.




Lake Kipawa Concerted Management Plan

Public consultation meeting April 18th 2013, Témiscaming




Presentation : Thibaut Potry

Presentation



- œ Project presentation
 - Historical
 - Objectives
 - Schedule
- œ Main issues



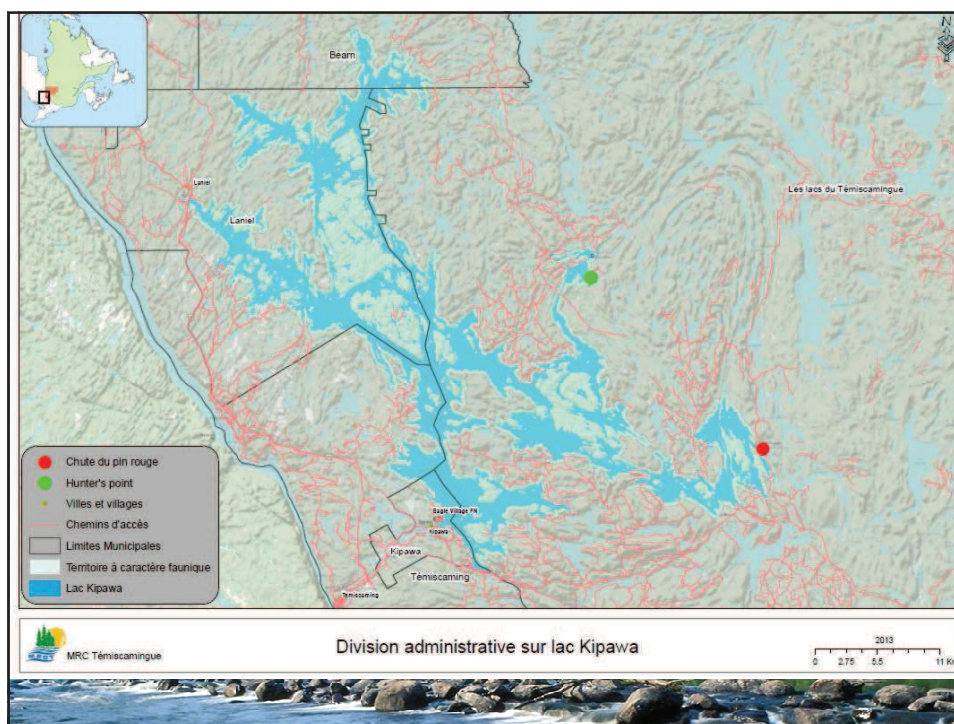
Historical background



∞ Lake Kipawa, a jewel of Témiscamingue

∞ 1980 : moratorium on outfitters and resorts

∞ 2009 : designation of Lake Kipawa as a “Territoire à caractère faunique” (Area of wildlife interest)



Concerted Management Plan

œ Concerted Management Plan supported by a Consultative committee to lift the moratorium.
To ensure that existing characteristics are maintained.



Now !



Project

- œ To have a global view of the Lake
- œ Numerous issues
- œ Government funds has been allocated by the CRÉ (Regional Board of Elected Officials)
- œ A partnership between MRCT and OBVT
- œ A Steering Committee
- œ A Project Manager

CRÉ CONFERENCE RÉGIONALE
DES ÉLUS DE L'ARCTIQUE-TÉMISCAINGUE

Ministère
des Ressources
naturelles
Québec



Objectives

☞ To know the development potential of Lake Kipawa if development is possible.

☞ To write a Concerted Management Plan based on

- Profil of the territory
- Community consultation on the future of the Lake



Users Consultative Committee

☞ Close follow-up of the project with a committee of representative

☞ Designation at the end of the meeting.

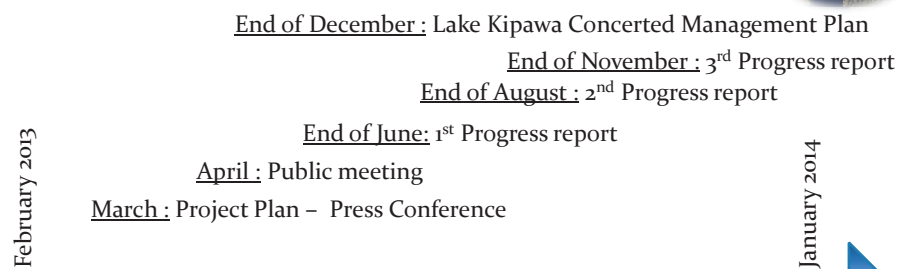


Users Consultative Committee

Groupes

Municipalities
Economic sector
Environmental and community organisations
First Nations
Government departments (resource)

Schedule



Some issues on the territory

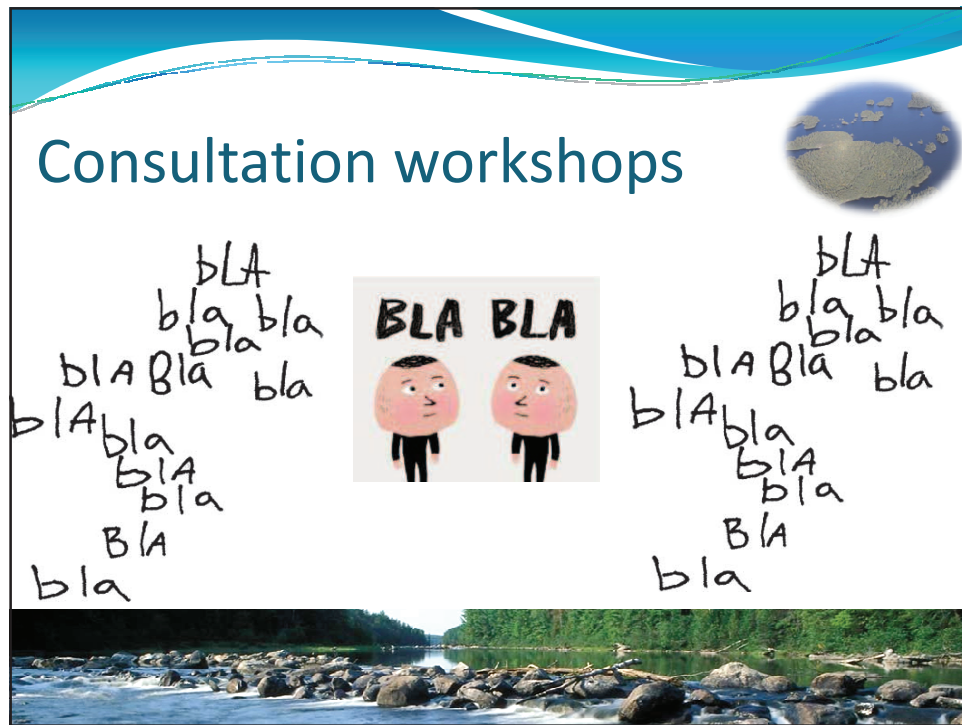


- ❧ Fish populations
- ❧ Fishing
- ❧ Drawdown
- ❧ Water quality : Septic systems / Boat-houses / cyanobacteria
- ❧ Invasive species
- ❧ Squatters
- ❧ Private lands
- ❧ Opemican National Park
- ❧ Mining and hydroelectric projects
- ❧ First Nations Rights and Titles



Questions





Groupes	Designation of representatives
Municipalities	
Témiscaming	Mandated
Kipawa	Mandated
Laniel	Mandated
Béarn	Mandated
Environmental and community organisations	
Environmental associations : APART, CREAT	1 representative to be designated
Residents' association	1 representative to be designated
Users' association (kayakers, canoes, boaters)	1 representative to be designated
Hunters, fishermen	1 representative to be designated
Economic sector	
Outfitters	1 representative to be designated
Tourism	1 representative to be designated
Industries (forest, mine)	1 representative to be designated
Hydroelectric company	1 representative to be designated
First Nations	
Eagle Village	Mandated
Wolf Lake	Mandated

Credits : SDT, ZEC Kipawa.

Appendix 2: Results of the consultation workshops

Workshop 1: What's the most important according to you for Lake Kipawa?

Summary	
Main themes	Sub-themes
Resolve the problems before developing vacationing or residential lots	Resolve the problems before developing vacationing or residential lots
Water quality	Preserving quality
	Sewer system for the municipality of Kipawa
	Septic tanks (including the need to determine the number of tanks complying with standards, inventory during the project?, municipalities must play their role)
	Boat cleaning
	Blue-green algae (municipalities must play their role)
	Shoreline buffer strips (municipalities must play their role)
Water level	Stabilisation
	Control
	Number 1, act now
	Impact on fish
	Drawdown is inconsistent with the population's needs
	Testing constant level for 3 years and see the effect. Give the trout a chance.
Invasive species	Clarify the presence of zebra mussels (according to a resident) and others.
Fish	Decreasing stock
	Catch-and-release to maintain stocks
	Enough pressure
	Control
	Fish farming at the Kipawa dam
Fishing	Certain people would prefer fishing at outfitters
	Net fishing has serious adverse effect on fish populations, and more so when practiced in sensitive areas (watercourse mouth)
	To be maintained as family, recreational and touristic activity
	Ice fishing still possible?
Protection	Ecosystem and environment conservation
	Supervision by wildlife officers
	Resource to ensure enforcement of environmental regulations (re: wildlife officer)

Summary	
Main themes	Sub-themes
Land occupancy	Occupants without permits (squatters)
	Private land (no surveyors)
Refusal of development	No mining - Matamec
	No industrial development
	No park
Project follow-up	Need to have follow-up, communication on the project
Post-project	If no Concerted Management Plan, still resolve the problems
	Management: management mechanism that involves the community (at all stages)
Other	Knowing what the Quebec government plans in terms of development
12	35
12 main themes	35 themes and sub-themes

Workshop 2: Should Lake Kipawa be developed?

Main ideas on development	Detail	Quotes
First and foremost	Compliance	If current situation is regulated and complies with regulations.
		Consolidation first
		Development after consolidation and after current problems have been resolved
		If done in compliance with regulations
	Private land	Regularisation of private lots
	Regulations	Current regulations do not allow to control and regulate sewers and pollution (to be reinforced)
Yes to development	Positive impact on the economy	Good for the economy
	Development based on outdoors and respect for nature	Develop environment-friendly family and outdoors activities
		Hotel/resort complex to contemplate nature, eco-responsible
		Development that respects the environment
		Respect for the ecosystems and the environment

Yes to development		Tourism or development, as appropriate, must respect the current charm of the lake and the environment
		We want to attract a clientele for the lake's beauty
		If there is any type of development, must not eliminate Lake Kipawa's history
	Development in already developed sectors	Development in already developed sectors and each sector decides if they agree or not.
		Development in already developed sectors (Laniel, Kipawa, Baie Dorval, etc.) but no new development
	Limited and controlled development	Vacationing if there is a management plan (not just any which way), respect of environmental standards, tourism. Monitoring all of this
		Development with control (notably vacationing)
		Develop other islands to accommodate boats
		Very limited and controlled development: more people = more polluted waters, more waste, more pollution; if bad development: loss of resource, fix problems before and do things the right way.
		Very limited and controlled development: more people = more polluted waters, more waste and more pollution; if bad development: loss of resource, fix problems before and do things the right way.
	To be developed for navigation	Develop other islands to accommodate boats

Yes to development		Develop infrastructures in the marinas: washing stations. Emptying of septic tanks
		Need for waste water emptying stations
		Boat washing stations
		Need for boat washing stations and houseboat pumping stations
	Development of fish farming	Develop fish farming to create jobs (use fishermen's fishing licenses to pay for fish farming)
	Other type of development	Develop restaurants and the commercial sector
No to development	Vacationing	No residential development
		No residential development
	Industrial (mining, hydroelectricity, etc.)	Industrial and mining projects ruin long term viability
		No to industrial activities
		No to mining and hydro development
		No to Matamec (how do they think they will control Matamec's pollution when they can't even enforce environmental regulations on septic tanks?)
		No to the mine (pollution)
	Opémican Park	No to the park
	Negative impacts	Impact of development: increased property value
		Impact of development: water quality
	Outfitting, commercial development	No additional outfitters, fill the existing accommodation capacity
		No to commercial development (certain owners can't make a living with their business)
	Loss of lake integrity and quality of life	Development would ruin Kipawa people's quality of life

		We will lose for ever what we now have if we go ahead with development
	Rental	Control rental of cottages to individuals who do not take outfitters into account
Other		Riparian owners association desired
4 classes	18 groups of ideas	44 development modalities/reasons for refusing development

Preliminary